



©Vapillon



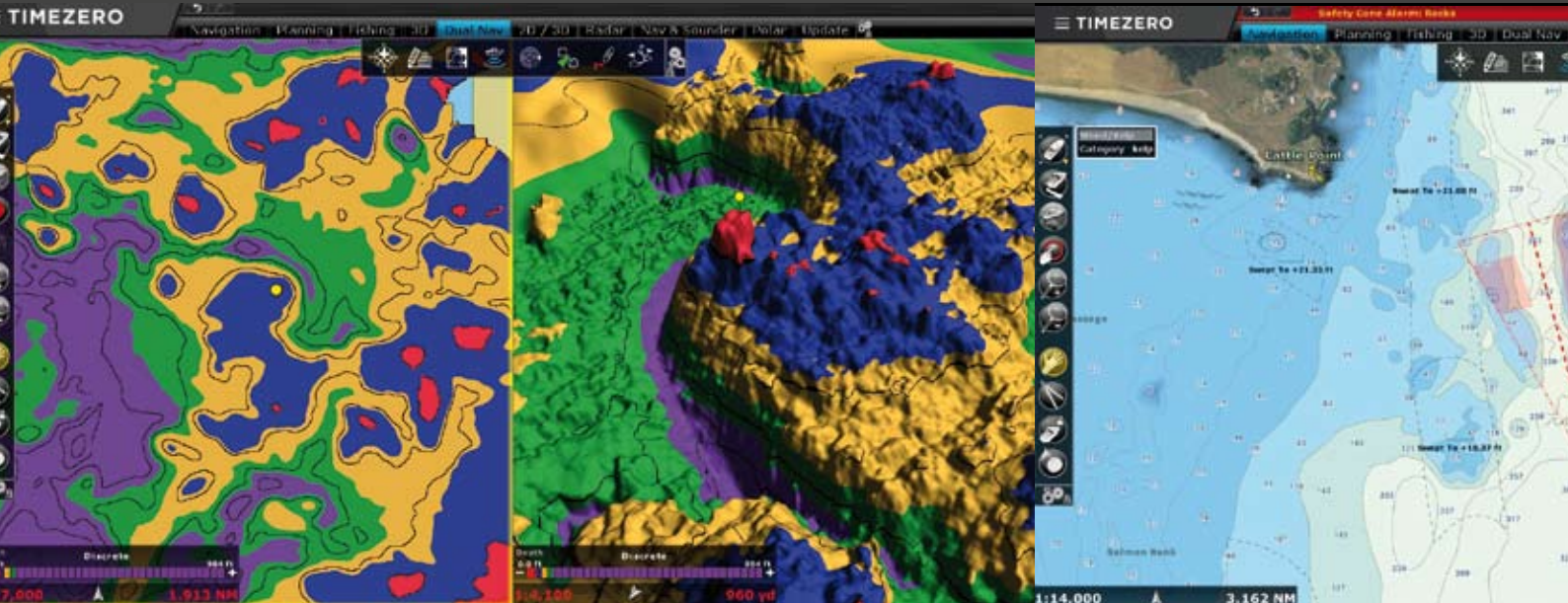
©Plisson

# TZ Professional v3

## The biggest TZ release ever!

Since its release in 2007,  
the TZ range has not stopped evolving.  
Staying ever true to its objective of meeting  
the most demanding needs of professionals at sea.





What does the new TZ PROFESSIONAL V3 bring to the table?

## Commercial Fishing

### ✓ New PBG module

The latest version of the PBG module will allow you to create charts of the seafloor even clearer and more realistic. The 2D and 3D imaging will now have customizable color coding scales which will allow for instantaneous precision research.

The new 3D view will make visualization of data even more simple and intuitive.

### ✓ New profile window, a remarkable new tool!

Instantaneously display a point to point depth profile window. This 2D view will allow you to identify the depth variations with unequalled precision (rocks, shipwrecks, etc.).

### ✓ Fishing Workspace

A workspace exclusively dedicated for professional fishermen will allow for personalization of 2D/3D so accessing information that is most pertinent is shown first.

## Workboats

### ✓ Compatibility with S57/S63 charts

Keeping up to date charts is an essential element to ensure the safety of all those at sea. TZ Professional is now compatible with the official S57/S63 formats.

The official S57/S63 charts are updated every week. These maps respect the S52 standard developed by the International Maritime Organization (IMO). The iconography offers a simplified display in order to improve the readability of the marine charts on screens.

### ✓ New Route Management

Route Planning is of the utmost importance for all professions at sea.

Our new technology assures the security of a route upon creation: Through color codes (green/red) it is instantaneously possible to know if the depth is sufficient for the safe passing of your boat.

An automatic route wizard will provide you with information regarding to the optimal departure and arrival time, taking into account tides and currents.





### ✓ New AIS features

The configuration of AIS can sometimes prove to be complex. Our new AIS module allows for complete configuration of all information directly within TZ Professional (Status, Destination, etc.).

Furthermore, it is now possible to send AIS text messages from TZ Professional. This system will allow for simplified communication, free and individual with all boats which are equipped with AIS.



### ✓ Security Cone

The new security cone is a feature in adherence with the official rules of the IMO. It takes into account the information of vector charts in order to detect isolated dangers and shallow areas. If an obstacle is detected inside this cone in front of the boat's trajectory, an anti-grounding alarm will automatically be triggered.

### ✓ Voyage Data Recorder Module

This new module that comes as an option, offers the possibility to save all the information received from the connected sensors to TZ Professional (GPS, Radar, AIS, etc.). It is particularly useful in the case of an incident as it allows one to look back at all the available information relative to the surrounding environment of the boat at that given date and time.



# TZ Professional v3

All these new features complete the list of original features that have made our software so successful over the last 30 years:

## Weather forecasts

When the elements get out of control, the sooner you know, the safer you are!

TZ Professional gives you free and unlimited access to weather forecasts worldwide.

Reliable weather forecasts (up to 16 days) can be downloaded for free, directly through the software.

Our oceanographic data (sea surface temperature, altimetry, etc.) will allow you to find the best fishing spots.

## FURUNO Radar Integration

Thanks to our partnership with FURUNO, the world's leading marine electronics manufacturer, TIMEZERO offers exclusive, native compatibility (simple Ethernet connection) with the commercial series of FURUNO FAR2xx7 radars and with FURUNO DRS.

The radar image can be overlaid directly on the chart in order to have a better understanding of the data. TZ Professional offers the ability to take full control of the radar directly from a dedicated workspace (Gain, Seaclutter, Rainclutter, etc.).

## FURUNO Sounder Integration

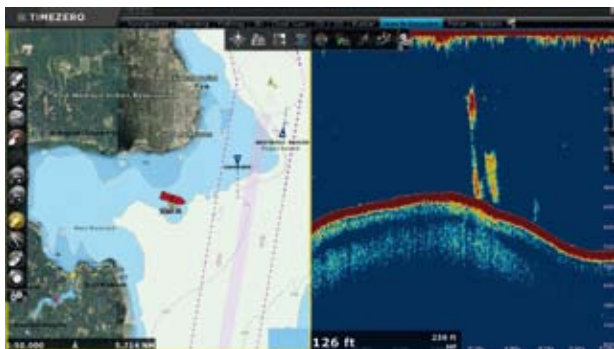
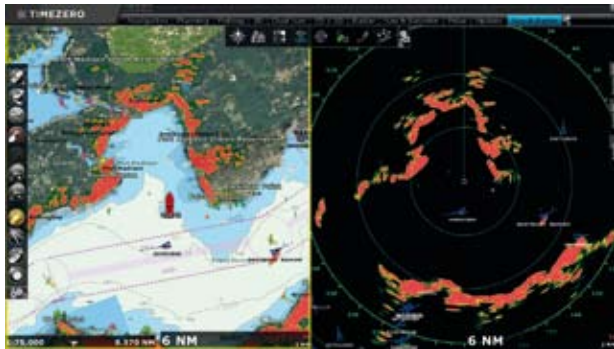
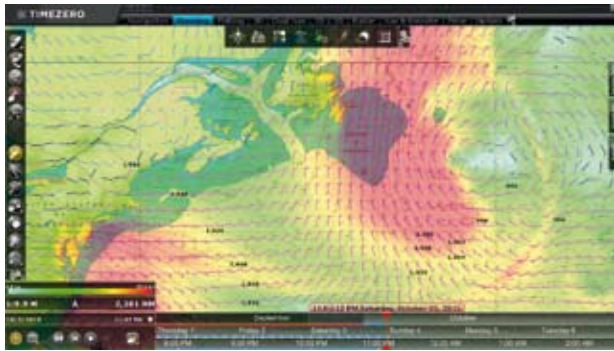
TZ Professional offers advanced compatibility with FURUNO Ethernet sounders (DFF1-UHD, FCV1150, etc.).

A simple Ethernet cable connected to TZ Professional enables to display the sounder image within TZ Professional. In addition to all classic sounder features, you can now record the sounder history for several hours and also geolocate the information in real-time on the chart.

## WASSP Integration

Once connected to WASSP, TZ Professional will save all the depth points generated by this multibeam sonar.

The association of these two products allow the drawing of the seafloor 100 times quicker than a conventional sounder, all while providing the high precision of 10 cm by 10 cm for the WASSP Survey version.



© Nobeltec, Inc.  
© MaxSea International

[www.maxsea.com](http://www.maxsea.com)

[www.nobeltec.com](http://www.nobeltec.com)

Europe : +33 5 59 43 81 00

US : +1 503 579 1414